

BILL HANNEY'S
THEATRE
BY THE SEA



SINGIN'
IN THE **RAIN**

JUNE 19-JULY 13, 2019



Growing. Harvesting. Serving.
Farm to Table and Pond to Plate



Indoor and Outdoor Waterside Dining
Open year round, 7 days a week

629 Succotash Road, South Kingstown, RI 401-783-4202
rhodyoysters.com



Because we've got you covered all summer long.



SOUTH COUNTY HOSPITAL

EMERGENCY DEPARTMENT

100 Kenyon Avenue, Wakefield, RI 02879 ~ 401-782-8000

EXPRESS CARE

3461 South County Trail, East Greenwich, RI 02818 ~ 401-471-6740
Mon-Fri: 8 am-6 pm; Sat: 8 am-4 pm; Sun 8 am-2 pm

268 Post Road (Rt.1 near Walmart), Westerly, RI 02891 ~ 401-604-2500
Mon-Fri: 8 am-6 pm; Sat-Sun: 8 am-4 pm

www.southcountyhealth.org



sea food sea friends sea view

Oceanside Dining on Narragansett Bay

Lunch, Dinner & Sunday Brunch

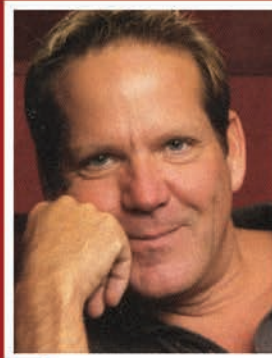
open 7 days year round

indoor/outdoor seating | live entertainment

seafood | oysters | burgers | steaks



40 Ocean Road, Narragansett Rhode Island
401.789.0700 | thecoastguardhouse.com



From the desk of

BILL HANNEY

Owner and Producer

Welcome to the 2019 Season! This is the biggest season I've put together since re-opening Theatre

By The Sea. With four big musicals including **SINGIN' IN THE RAIN**, **Disney's NEWSIES**, **SATURDAY NIGHT FEVER**, and the World Premiere of **LOVE AND OTHER FABLES**, along with five concerts, and five children's shows - there is more to see than ever before!

As a Producer, I am often asked what I consider to be the most challenging part of my job. The answer is always the same. The most difficult part of this job is choosing a four-show season which is varied and exciting enough to keep our loyal subscribers happy, as well as attracting those who are on vacation in the area, and theatre lovers from across the region.

Based on the record-breaking audiences, I think we have found a winning formula: One family show, one true classic, one exciting big blockbuster, and then a "wildcard" title which balances out the other three titles. Once the shows are set we then start to hire talented directors, choreographers, and others to create the best possible productions for audiences to enjoy.

The fall and winter are spent planning each production and then casting the shows. Casting has always been one of my favorite parts of the process. We hold auditions both locally and in New York. Over the course of a few weeks we see hundreds of amazing performing artists for each show. Then the producing team meets to start to put together the casts.

The casting process is a difficult one. I wish we could hire every talented person who walks into the room. However, there are many factors which go into casting each show and every year, it comes together miraculously!

And believe it or not, before the doors open for the current season, the planning starts all over again for next year's season and beyond.

The 2019 Season has been both a challenge and a joy to put together and I hope you are going to love it just as much as I will.



Unparalleled

Client Service | Local Expertise | Global Reach



Washington County's Leading Real Estate Company Since 1991*



Charlestown Office
4009 Old Post Road
Charlestown, RI
401.364.3388

South Kingstown Office
235 Main Street
South Kingstown, RI
401.783.9611



RandallRealtors.com
WE'RE LOCAL WE'RE GLOBAL



*Source RIMLS #1 Real Estate Company Jan. 1, 1991-Dec. 31, 2018



A note from **KEVIN P. HILL** Producing Artistic Director

Welcome to our 2019 Season at the historic and picturesque Theatre By The Sea. We are overjoyed to embrace our returning subscribers and welcome new patrons. This season will dazzle and delight you as we produce four titles which will surely bring a smile to your face and a tune in your heart.

We begin with a brand new screwball musical comedy that will have you rolling in the aisles with laughter. **LOVE AND OTHER FABLES** written by John McMahon and Jay Jeffries will surely tickle your fancy as you watch Aesop pursue the girl of his dreams. The talented cast, along with this smart musical, is the perfect start to our brilliant season.

Next on our stage is the ever-popular **SINGIN' IN THE RAIN**. We welcome Kelli Barclay to our Theatre By The Sea family. When it comes to tap-dancing, she is the best in the business. Please relish in the tremendous talents of this cast. This production will leave you wanting for more. You may even take up tap-dancing lessons.

Disney's NEWSIES is inspired by the real-life newsboys' strike of 1899 in New York City. Starting as a movie in 1992, the musical made its Broadway debut in 2012. Winning the Tony® Award for Best Choreography, you will marvel at the athleticism of this cast. I can promise you an outstanding production with this talented creative team.

We will close out our energetic season with **SATURDAY NIGHT FEVER**. "You Should Be Dancing" as you break out your "Boogie Shoes" and disco the night away in our historic barn theatre. This score features many hits from the Bee Gees that will have you singing down Cards Pond Road.

Please, tell your friends and make sure they reserve a spot for a fantastic dinner at the Bistro By The Sea. This is a season not to be missed! Enjoy!

SAIL AWAY...

Only 30 Minutes!
Year-round from Pt. Judith, summer service from Newport & Fall River






[f](#) [t](#) [y](#) [i](#)

{BLOCKISLANDFERRY.COM} {TOLL FREE 866.783.7996} THE **BLOCK ISLAND FERRY**



Because getting the best care starts here

An expert medical team offering the latest cancer care advances, plus partnerships with leading cancer centers throughout the region for coordinated care when needed. Hear our patient stories at southcountyhealth.org/starthere.

401-783-6670
southcountyhealth.org/starthere



100 Kenyon Avenue, Wakefield, Rhode Island 02879

Lisa Diebold
with Dr. Gerald Colvin

ALL-NEW SATURDAY SUMMER CONCERT SERIES!

BILL HANNEY PRESENTS
CapelIVE!
AT THE BARNSTABLE PERFORMING ARTS CENTER
- HYANNIS -

**FIVE CELEBRITY CONCERTS IN HYANNIS!
ONE SENSATIONAL SUMMER**
SINGLE TIX • GROUP DISCOUNTS • 5-SHOW PACKAGES

BROADWAY SPOTLIGHT
FIVE BROADWAY STARS
ONE UNFORGETTABLE EVENING!

JULY 13 | 8PM

HARVEY ROBBINS' **DOO-WOPP**
HALL OF FAME OF AMERICA® CONCERT
STARRING SHIRLEY REEVES

JULY 20 | 8PM

SANDY HACKETT'S **RAT PACK SHOW**

JULY 27 | 8PM

DANCE TO THE MOVIES

AUG 3 | 8PM

AN EVENING WITH THE **CELEBRITY HOUSEWIVES**
MARGARET, TERESA & SONJA!

AUG 10 | 8PM

TICKETS START AT JUST **\$29!**
SEE ALL FIVE SHOWS &
SAVE 20%
IT'S LIKE YOU GET ONE SHOW **FREE!**

CAPELIVESHOWS.COM | 855.577.LIVE

744 W. MAIN ST. HYANNIS | [f](#) [t](#) [y](#) [i](#) @CAPELIVESHOWS

Bagelz

THE BAGEL BAKERY

- Bagels boiled then baked
- Nitro Cold Brew Coffee
- Breakfast & deli sandwiches
- Smoked fish sandwiches
- Soups, salads, pastries



90 Pershing Avenue, Wakefield, RI
(401) 783-9700

BAGELZRI.COM



Cathleen Naughton Associates
Just like family



- Private duty nurses' aides
- Home concierge services
- Geriatric care management
- Skilled visiting nurse service

Warwick
401.773.7401

Wakefield
401.783.6116

Member of Saint Elizabeth Community
www.stelizabethcommunity.org

A CareLink Partner and non-profit,
nonsectarian 501(c)(3) charitable organization



ORSON AND BRUSINI, LTD
COUNSELORS AT LAW

ORSONANDBRUSINI.COM
Providence • Newport • Wakefield

A PROUD SUPPORTER OF
THEATRE BY THE SEA



POWER EQUIPMENT

PATSPower.COM

401.364.6114 • CHARLESTOWN, RI



EST 1996

Arturo Joe's

ITALIAN GRILL
& MARTINI LOUNGE

Veal • Pork • Steak • Shrimp
Fish • Pasta • Sandwiches
Burgers • Soups • Appetizers
Wood Grilled Pizzas

Guten Free Friendly Menu
Children's Menu

FRI - MON 11:30am to 1:00am
TUE - THU 3:30pm - 1:00am
Late Night Menu Until 12:30am

Lunch & Dinner • Take-Out
Catering

401-789-3230

www.arturojoes.com

140 Point Judith Road
Mariner Square • Narragansett, RI



Fine Fine Wines
Liquors
Domestic Beers
Imported Beers
Micro Brews

Mon - Sat | 9am - 10pm

Sun 10am - 6pm

231 Old Tower Hill Road • Wakefield, RI
(401) 783-8313

ROOFING UNLIMITED



CONSTRUCTION, INC.

RI REG# 867

(401) 539-0088

www.RoofingUnlimitedRI.com

SWEENOR'S
CHOCOLATES
FIFTH GENERATION CONFECTIONERS

WE SHIP UPS!

Garden City
Cranston, RI
(401) 942-2720

21 Charles St
Wakefield, RI
(401) 783-4433

www.sweenorschocolates.com

quickcare
AT THUNDERMIST

Wakefield | West Warwick | Woonsocket

WALK-IN CARE
OPEN 365 DAYS PER YEAR
M-F 9:30 AM - 9:30 PM
Sat/Sun & Holidays 9:00 AM - 5:00 PM

401-767-4100

Flowerthyme




FLOWERS WITH AN
ENGLISH GARDEN FLAIR

135 MAIN STREET
SOUTH KINGSTOWN, RI
(401) 792-3440

WWW.FLOWERTHYME.COM
EMAIL: JOYTHYME@AOL.COM

Your #1 source
for local news
and innovative
marketing
solutions.



Admiral Dewey Inn
1898 Victorian Bed & Breakfast

"Walk to the Beach"

668 Matunuck Beach Road, Wakefield, RI 02879

Call (401) 783-2090


On the National Register of Historic Places



SUN media group

thewesterlysun.com

Proudly Supporting
Our Community
For Over a Century



THORP & TRAINER
INSURANCE
Since 1910

401.596.0146 • 860.449.9100

www.thorptrainer.com
Westerly, RI

Trusted Choice

AUTO | BUSINESS | HOME

BELMONT MARKET
high quality, low prices a better place to shop

Deli	Dairy
Meats	Bakery
Seafood	Grocery
Produce	Sushi-Go!
The Herb Wyfe	Birdwatchers
Prepared Foods	Natural Grocery
Beauty & Wellness	Specialty Cheese
Italian Specialty & Prepared Foods	

600 Kingstown Road
Wakefield, Rhode Island
www.belmontmarket.com



URI THEATRE

SEASON 2019 - 2020

A Brief History of the
Earth and Everything
in It (as performed by Ms. LoPiccolo's Third-Grade Drama Group from the Wilam Jennings Bryan Elementary School in Springfield, Missouri)
by Dave Rabinow

SHE KILLS MONSTERS
by QUI NGUYEN

Richard III
by William Shakespeare

Monty Python's Spamalot
Book and Lyrics by Eric Idle,
Music by John Du Prez and Eric Idle

Tickets and information available at
web.uri.edu/theatre/

HOME BASE
DIGITAL

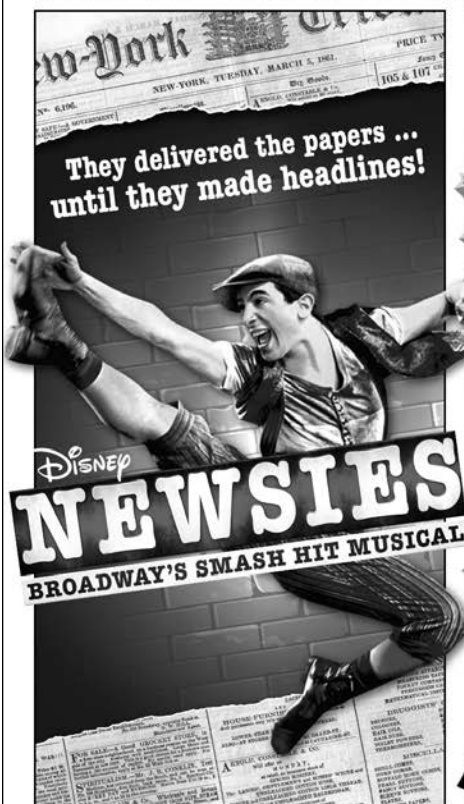
The Westerly Sun
thewesterlysun.com

Homebase Digital
Mystic River Press
South County Press
Westerly Pawcatuck Express

99 Mechanic Street
Pawcatuck, Connecticut
860.495.8200
sun-mediagroup.com

MEDIA THAT MOVES >>

COMING SOON TO THEATRE BY THE SEA!



JULY 17 - AUG 10

AUG 14 - SEPT 8

MONDAY
CONCERTS
AND EVENTS



JULY 8



JULY 29



AUG 5



AUG 26

KIDS
SHOWS



JULY 5



JULY 12



JULY 26



AUG 2



AUG 9

BILL HANNEY'S
THEATRE
BY THE SEA

866.811.4111 OR 401.782.8587
THEATREBYTHESEA.COM
364 CARDS POND RD. WAKEFIELD, RI



@OFFICIALTBT

BILL HANNEY
OWNER AND PRODUCER

BILL HANNEY'S
THEATRE
BY THE SEA

KEVIN P. HILL
PRODUCING ARTISTIC DIRECTOR

PRESENTS

SINGIN' IN THE RAIN

SCREENPLAY BY

BETTY COMDEN & ADOLPH GREEN

SONGS BY

NACIO HERB BROWN & ARTHUR FREED

Based on the classic Metro-Goldwyn-Mayer film, by special arrangement with
WARNER BROS. THEATRE VENTURES, INC.

Music published by EMI, all rights administered by Sony/ATV Music Publishing LLC

(Original Movie Choreography by GENE KELLY and STANLEY DONEN)

Produced by arrangement with MAURICE ROSENFELD, LOIS F. ROSENFELD and CINDY PRITZKER, INC.

WITH

TIM FALTER* ALLSUN O'MALLEY SEAN MCGIBBON*
CURT DENHAM* MYCHAL PHILLIPS* THOM WARREN*

MAGGIE BERGMAN MADI BEUMEE VICTORIA BIRO CONNOR COUGHLIN
CRAIG FIRST ELIZABETH FLANAGAN KELLY GLEASON JASON HAGGERTY
GABRIEL KEARNS NATALIE LIVINGSTON ANTHONY J. MARTINEZ LIAM MCCARTHY
MALLORY NOLTING ELLEN PETERSON KATE ROCCHIO JAMES SCHULTZ
JOEY SIMON MICHAEL SKRZEK KAYLEE VERBLE

SCENIC DESIGN

KYLE DIXON

COSTUME COORDINATOR

DAVID COSTA-CABRAL

LIGHTING DESIGN

JOSE SANTIAGO

SOUND DESIGN

JOANNA LYNNE STAUB

WIG & HAIR DESIGN

MEG KANE

ASSISTANT DIRECTOR/CHOREOGRAPHER

KELLY GLEASON

ASSISTANT STAGE MANAGER

JAMES KANE*

PRODUCTION STAGE MANAGER

KATE L. FERDINANDI*

CASTING DIRECTOR

MATTHEW CHAPPELL

GENERAL MANAGER

TOM SENTER

ASSOCIATE PRODUCER

THOM WARREN

MUSIC DIRECTION

MILTON GRANGER

DIRECTED AND CHOREOGRAPHED BY

KELLI BARCLAY*

JUNE 19 - JULY 13, 2019

Costume package for SINGIN' IN THE RAIN provided by Maine State Music Theatre Costume Rentals
Additional costumes provided by North Shore Music Theatre

SINGIN' IN THE RAIN is presented through special arrangement with Music Theatre International (MTI).

All authorized performance materials are also supplied by MTI.

421 West 54th Street, New York, NY 10019 | Phone: 212-541-4684 | Fax: 212-397-4684

www.MTIShows.com

* Member of Actors' Equity Association, the Union of Professional Actors and Stage Managers in the United States.



This theatre operates under an LQA Agreement with Actors' Equity Association. Through its agreement with Equity, this theatre has committed to the fair treatment of the actors and stage managers employed in this production. AEA is a member of the AFL-CIO and is affiliated with FIA, an international organization of performing arts unions. For more information, visit www.actorsequity.org.



The Director-Choreographer is a member of the STAGE DIRECTORS AND CHOREOGRAPHERS SOCIETY, a national theatrical labor union.

CAST OF CHARACTERS

(in order of appearance)

Dora Bailey	ELLEN PETERSON
Zelda Zanders	KAYLEE VERBLE
Olga Mara	MADI BEUMEE
Mary Margaret	ELIZABETH FLANAGAN
R.F. Simpson	CURT DENHAM*
Roscoe Dexter	THOM WARREN*
Cosmo Brown	SEAN MCGIBBON*
Lina Lamont	MYCHAL PHILLIPS*
Don Lockwood	TIM FALTER*
Young Don	KATE ROCCHIO
Young Cosmo	LIAM McCARTHY
Rod	JAMES SCHULTZ
Kathy Selden	ALLSUN O'MALLEY
Policeman	ANTHONYJ. MARTINEZ
Butler	MICHAEL SKRZEK
1st Assistant Director	GABRIEL KEARNS
2nd Assistant Director	JOEY SIMON
3rd Assistant Director	CRAIG FIRST
Sid Phillips	ANTHONY J. MARTINEZ
Miss Dinsmore	ELLEN PETERSON
Diction Teacher	JAMES SCHULTZ
Tenor	CONNOR COUGHLIN
Sound Engineer	ANTHONY J. MARTINEZ
Girl in the Green Dress	KELLY GLEASON
Ensemble	MAGGIE BERGMAN, MADI BEUMEE, VICTORIA BIRO, CONNOR COUGHLIN, CRAIG FIRST, ELIZABETH FLANAGAN, KELLY GLEASON, JASON HAGGERTY, GABRIEL KEARNS, NATALIE LIVINGSTON, ANTHONY J. MARTINEZ, LIAM McCARTHY, MALLORY NOLTING, ELLEN PETERSON, KATE ROCCHIO, JAMES SCHULTZ, JOEY SIMON, MICHAEL SKRZEK, KAYLEE VERBLE

UNDERSTUDIES & SWINGS

Understudies are never substituted for listed performers unless a specific announcement is made at the time of the performance.

Understudies for: R.F. Simpson and Roscoe Dexter - JAMES SCHULTZ; Don - MICHAEL SKRZEK;
Cosmo - CONNOR COUGHLIN; Lina - KAYLEE VERBLE;
Kathy - ELIZABETH FLANAGAN; Rod and Diction Teacher - JOEY SIMON
Swings: VICTORIA BIRO, JASON HAGGERTY, NATALIE LIVINGSTON

Production Stage Manager - KATE L. FERDINANDI*

Assistant Stage Manager - JAMES KANE*

Dance Captain - TIM FALTER*

* Member of Actors' Equity Association, the Union of Professional Actors and Stage Managers in the United States.

ORCHESTRA

Conductor, Keyboard	MILTON GRANGER
Drums	MIKE SARTINI
Keyboard	NATHAN URDANGEN
Bass	JOE BENTLEY
Trumpet.....	GREG WHITAKER
Flute, Clarinet, Alto Sax	RICH MARCHETTI
Trombone	JAMES MONAGHAN, SETH BUDAHL

PLEASE TURN OFF ALL PHONES & ELECTRONIC DEVICES

THE USE OF ANY RECORDING DEVICE, EITHER AUDIO OR VIDEO, AND THE TAKING OF PHOTOGRAPHS, EITHER WITH OR WITHOUT FLASH, IS STRICTLY PROHIBITED.



SCENES & MUSICAL NUMBERS

ACT I

Scene 1: Outside Graumann's Chinese Theatre, Hollywood, 1927	
"Fit as a Fiddle"	Don and Cosmo
Scene 2: Inside Graumann's Chinese Theatre - Film Premiere of "The Royal Rascal"	
Scene 3: Stage of the Theatre	
Scene 4: Hollywood Boulevard, that night	
Scene 5: R.F. Simpson's Mansion	
"All I Do Is Dream of You"	Kathy and Chorus Girls
"You Stepped Out of a Dream"	Don
Scene 6: Stage at Monumental Pictures Studio	
"Make 'Em Laugh"	Cosmo
Scene 7: The set of "The Dueling Cavalier"	
Scene 8: Monumental Studios Soundstage	
"Beautiful Girls"	Tenor
"You Are My Lucky Star"	Kathy
Scene 9: Deserted Soundstage	
"You Were Meant for Me"	Don
Scene 10: Vocal Coach's Offices	
"Moses Supposes"	Don and Cosmo
Scene 11: Monumental Studios Soundstage "Dueling Cavalier"	
"Moses Supposes" (Reprise)	Ensemble
Scene 12: Major Studio Preview of "The Dueling Cavalier"	
Scene 13: Don's House	
"Good Morning"	Don, Cosmo and Kathy
Scene 14: Street Outside Kathy's House	
"Singin' In The Rain"	Don

ACT II

Scene 1: R.F. Simpson's Office	
Scene 2: Recording Studio	
"Would You"	Kathy
"Would You" (Reprise)	Don
Scene 3: Lina's Dressing Room	
"What's Wrong with Me?"	Lina
Scene 4: R.F. Simpson's Office	
"Broadway Melody (Gotta Dance)"	Cosmo, Don and Ensemble
Scene 5: Graumann's Chinese Theatre. The Premiere of "The Dancing Cavalier"	
"Would You" (Reprise)	Lina and Kathy
"You are My Lucky Star" (Reprise)	Don and Kathy
"Singin' In The Rain"	Ensemble

THERE WILL BE ONE FIFTEEN MINUTE INTERMISSION.

Black and White Movie Sequences Produced and Filmed by

HAMLIN MEDIA PRODUCTIONS

<i>Crew Chief/Videographer/Editor</i>	<i>Videographer</i>	<i>Production Assistant</i>
ERIC HAMLIN	MIKE CALLAHAN	TYLER HAMLIN

FILM CAST

Lina Lamont - MYCHAL PHILLIPS Don Lockwood - TIM FALTER**

Villain - JAMES SCHULTZ Henchmen - ANTHONY J. MARTINEZ, JOEY SIMON

Ladies in Waiting - MAGGIE BERGMEN, KELLY GLEASON

Black and white movie sequences filmed on location at Middlebridge School in Narragansett, RI.

Special thanks to the school and John Kaufman, Shannon Leventhal and Katey Tillinghast.

Special thanks to Shirley Eastham and the Narragansett Historical Society.

WHO'S WHO IN THE CAST



TIM FALTER* (*Don Lockwood, Dance Captain*) is making his Theatre By The Sea debut. Off Broadway: *Cagney* (Jack Warner & Bob Hope standby-both performed). Nat'l Tour: *Some Like It Hot* (starring Tony Curtis). Regional: *Singin' in the Rain* (Don Lockwood), *The Drowsy Chaperone* (George), *42nd Street* (Andy Lee) Goodspeed Musicals; *Kiss Me Kate* (Bill Calhoun) Summer Theatre of New Canaan; *Irving Berlin's White Christmas* (Phil Davis) Pioneer Theatre Co.; *Crazy For You* (Bobby Child) SurfFlight Theatre; *Noises Off* (Gary LeJeune) Totem Pole Playhouse; and *Grease* (Vince Fontaine/ Teen Angel) Engeman Theatre. Dedicated in loving memory to Mom & Dad. timfalter.com



ALLSUN O'MALLEY (*Kathy Selden*) is thrilled to be making her Theatre By The Sea debut! Other credits include North Shore Music Theatre's *A Christmas Carol*; New London Barn Playhouse's *Newsies* (Katherine), *How to Succeed in Business...* (Rosemary), and *Brigadoon* (Jane Ashton); Wagon Wheel Theatre's *My Fair Lady* (Eliza), *Seussical* (Gertrude), and *Into the Woods* (Little Red); and Reagle Music Theatre's *Wonderful Town*, *Singin' in the Rain*, *Me and My Girl*, and *South Pacific*. Penn State BFA Musical Theatre. Endless thanks to Kevin and Matthew Chappell-Hill, Kelli Barclay, Avalon, and my wonderful friends and family!



SEAN MCGIBBON* (*Cosmo Brown*) is a Texas native with a huge case of ADHD, resulting in a childhood of dance, piano, magic, and juggling. Aside from musical theatre, Sean competed at the nationals for 2 sports (collegiate table tennis, U21 National Kayak Polo Team). Credits: B'way 1st Nat'l Tour: *Million Dollar Quartet* (Jerry Lee Lewis), *Singin' in the Rain*

(Cosmo Brown, NSMT), 25th Anniversary Nat'l Tour *Buddy: The Buddy Holly Story*, *Encores! On Your Toes* (Dir. Warren Carlyle), and *The Great American Mousical* (Dir. Julie Andrews). 2012 BFA Musical Theater/Psychology Minor/ Jazz Piano Minor Texas State University.



CURT DENHAM* (*R.F. Simpson*) is thrilled to be joining this talented cast. Recent appearances include *The Wizard in The Wizard of Oz* at Casa Mañana, *Captain Brackett in South Pacific* at Cape Playhouse, Alan in *Baby* at TheatreZone, and Seitz in *Newsies* and Commander Harbison in *South Pacific*, both at Maltz Jupiter Theatre. Other regional credits include Pittsburgh Civic Light Opera, Theatre Under The Stars, Lyric Stage Company of Boston, TheatreWorks, Ocean State Theatre Company, Cabrillo Stage, Center Repertory and Sierra Repertory.



MYCHAL PHILLIPS* (*Lina Lamont*) is thrilled to be in RI playing a dream role! Nat'l/Int'l tours: *Anything Goes* (Erma), *Legally Blonde* (Paulette Bonafonte), *Seussical* (Bird Girl). Regional: *Anything Goes* (Erma, Ogunquit Playhouse / Westchester Broadway), *White Christmas* (Rhoda, Ogunquit), *Brigadoon* (Meg, The Wick Theatre), *Rocky Horror Show* (Columbia, Gateway), *Shrek* (Gingy, Ocean City Theatre Company), *On The Town* (Gateway). Thanks to my husband & neighbors for listening to Lina's voice for a few weeks and not moving out. Love to Mario, Mom, Dad, Coleman, Ally, & Gracie. This is for Kyle! MychalPhillips.com



THOM WARREN* (*Roscoe Dexter*) is pleased to return to the TBTS stage having last appeared as Maurice in *Beauty and the Beast* (BroadwayWorld nom.) Thom has had a long and varied

WHO'S WHO IN THE CAST

career, from ballet dancer to associate producer. Some of his favorite performance credits include appearances at Equity Library Theatre, Kansas City Starlight, Pittsburgh Civic Light Opera, The MUNY, Alabama Shakespeare Festival, Westbury and Valley Forge Music Fairs and North Shore Music Theatre in a wide variety of shows including *West Side Story*, *Fiorello!*, *Seesaw*, *Funny Girl*, *My One and Only*, *Oliver!* and *Paint Your Wagon*.



MAGGIE BERGMAN (*Ensemble*) is thrilled to be making her professional debut at Theatre By The Sea! She is currently pursuing a BFA in musical theatre at Boston Conservatory at Berklee. Boston Conservatory mainstage credits include *A Chorus Line* (Judy Turner) and *Cabaret* (Kit Kat Girl). Other favorite past credits include *Big Fish* (Sandra), R&H's *Cinderella* (Cinderella), and *Hairspray* (Amber Von Tussle). Endless gratitude to Kelli and the entire Theatre By The Sea team. All my love to my teachers, family, and friends for their constant support! [@maggie_rose_b](https://www.instagram.com/maggie_rose_b)



MADI BEUMEE (*Olga Mara, Ensemble*) is thrilled to return to the TBTS stage having just been seen in *Love and Other Fables*. A recent graduate from Syracuse University, where she received a BFA in Musical Theater, Madi was recently seen in Syracuse Stage's production of *Elf the Musical* (Ensemble, u/s Emily Hobbs). Past credits include *Into the Woods* (Baker's Wife), *Crazy For You* (Tess), *Berlin to Broadway with Kurt Weill*, and *Nine*. She recently played Jennifer in the workshop production of *Fly More Than You Fall*, written by Nat Zegree & Eric Holmes and directed by Jeff Whiting. IG: [@madibeumee](https://www.instagram.com/madibeumee). madibeumee.com



VICTORIA BIRO (*Ensemble, swing*) is thrilled to be making her Theatre By The Sea debut this summer! She is pursuing a BFA in Musical Theatre at Boston Conservatory at Berklee. BoCo MainStage credits include *A Chorus Line* (Larry), *Cabaret* (Texas) and *Dirty Rotten Scoundrels* (Jolene u.s. / Ensemble). Other credits include *Rent* (Maureen) and *Oklahoma!* (Dream Laurey). She is so thankful for her family, school, and friends for their constant love and support! [@vstarthemusical](https://www.instagram.com/vstarthemusical)



CONNOR COUGHLIN (*Production Tenor, Ensemble, u/s Cosmo Brown*) is a graduate of the Royal Winnipeg Ballet's Professional Division and Circle in the Square Theatre School. Connor performed in the *Christmas Spectacular Starring the Radio City Rockettes* and will be returning next season. National Tours: *42nd Street* (Billy Lawlor), *Elf*. Connor worked with Broadway Dance Lab (Summer 2018 Cycle), and choreographer Josh Prince at the Fire Island Dance Festival. Connor teaches at Luigi's Jazz Centre in New York City. Thank you to my teachers and to the company of *Singin' in the Rain*.



CRAIG FIRST (*3rd Assistant Director, Ensemble*) is happy to return to the Theatre By The Sea stage, after having recently been seen in the World Premiere of *Love and Other Fables*. This is his first summer at TBTS and he is loving every second of it! He was recently seen in *Beauty and The Beast* at the Gateway Playhouse. Other favorite roles include *A Chorus Line* (Tom) and *Pageant! The Musical* (Miss West Coast). Many thanks to Danny Prather at Hudson Artists Agency and to all my family and friends who support me relentlessly. Enjoy the show!

WHO'S WHO IN THE CAST



ELIZABETH FLANAGAN (*Mary Margaret, Ensemble, u/s Kathy*) was recently seen on the TBTS stage in the World Premiere of *Love and Other Fables* and previously as Frenchy in *Grease* (2014). She has been seen all across the country in the national tours of *Cabaret* (Helga/Sally cover), *A Christmas Story*, and the international tour of *My Fair Lady* (Eliza cover). She was also featured in the Pre-Broadway run of *On The Town* at Barrington Stage, *Jekyll & Hyde* at North Shore Music Theatre, *My Fair Lady* at Riverside Theatre, *Beauty and the Beast* at Gateway Playhouse, and *Kiss Me Kate* at Opera North. Follow her @lauraeflanagan



KELLY GLEASON (*Girl in Green Dress, Ensemble, Assistant Director/Choreographer*) is thrilled to be making her TBTS debut! National Tour: *42nd Street*. Favorite Reg'l: *Holiday Inn* (Paper Mill Playhouse), *42nd Street* (North Shore Music Theatre), *Anything Goes* (Westchester Broadway Theatre), *My Fair Lady* (New Bedford Festival Theatre), *Crazy for You, Chicago*. Desigual show at NYFW. Pace University grad (BS in Commercial Dance and Psychology). Kelly is thankful for her teachers and instructors that played a vital role in making her successful in her quest to perform. Thanks to Mom, Dad, Kelli, and the TBTS team!



JASON HAGGERTY (*Ensemble, Swing*) is a sophomore Musical Theater major at the Boston Conservatory and is thrilled to be making his Theatre By The Sea debut. He graduated as a dance major from LaGuardia High School in New York City. Previous theater credits include *Cabaret* and dance captain/ensemble in *42nd Street*. He would love to thank his family and friends for making his dreams come true!



GABRIEL KEARNS (*1st Assistant Director, Ensemble*) is so excited to be making his Theatre By The Sea debut! Gabriel was most recently seen as Mike in *A Chorus Line*. Past credits include Jetsam in *The Little Mermaid*, Kyle in *Legally Blonde*, A-Rab in *West Side Story*, and dance captain for both *The Mystery of Edwin Drood* and *Anything Goes*. Originally from Houston, TX, Gabriel moved to New Jersey where he graduated with a BFA in Musical Theatre from Montclair State University. Thanks to this wonderful creative team as well as my parents, grandparents and brother for all of their love and support.



NATALIE LIVINGSTON (*Ensemble, Swing*) is making her TBTS debut in this production of *Singin' in the Rain*! She is pursuing her BFA in Musical Theatre at The Hartt School, and is thrilled to be here this summer. Some of her favorite roles she's played include Johanna in *Sweeney Todd*, Marcy Park in *25th... Spelling Bee*, and Maggie in *A Chorus Line*. She would like to thank her family, friends, and educators for believing in her, and the entire TBTS team!



ANTHONY J. MARTINEZ (*Policeman, Sid Phillips, Sound Engineer, Ensemble*) is a proud native of San Antonio, Texas. He attended Oklahoma City University as a dance major where he was featured in several ballets and repertory pieces. He was most recently seen performing on Regent Seven Seas and Oceania Cruises as a singer/dancer. He has performed with regional theatres in several productions including dancing the role of Dream Curly in *Oklahoma!* at Lyric Theatre of Oklahoma. He's so thankful for the opportunity to work at TBTS and gives all thanks & praise to God, his parents, and the amazing teachers that molded his artistic career.

WHO'S WHO IN THE CAST



LIAM MCCARTHY (*Young Cosmo Brown, Ensemble*) is happy to return to TBTS after performing in *Seussical Jr.* (Jojo), and *Willy Wonka Jr.* (Charlie). He is in the 7th grade at Wickford Middle School, where he is the lead pianist in the jazz band. He most recently played Gavroche in the NKHS production of *Les Misérables*. Liam has been part of NK Drama junior productions such as *Peter Pan* (Michael), *Annie* (Rooster), *Into the Woods* (The Baker), and *Shrek* (Shrek). He does commercial work and voiceovers and enjoys singing, playing the piano, and dancing. Theatre is his passion and he is excited to be in this production!



MALLORY NOLTING (*Ensemble*) is thrilled to be performing at Theatre By The Sea! Mallory is a graduate of Marymount Manhattan College with a degree in Dance (Teaching Dance Arts). Her favorite credits include *42nd Street* National Tour (Phyllis, Dance Captain/Swing), *Swing! The Musical* (Norwegian Cruise Line), *Anything Goes* (Westchester Broadway Theatre), and *Holiday Inn* (Papermill Playhouse). Thanks to Kelli Barclay and the cast and crew for everything! Special shout out to her family, friends, teachers, and GBM for their continuous love and support. MalloryNolting.com @mallory_dana_



ELLEN PETERSON (*Dora Bailey, Miss Dinsmore, Ensemble*) is delighted to return to TBTS! (*Beauty and the Beast* - Mrs. Potts, *Sister Act* - Sister Mary Martin-of-Tours, *My Fair Lady* - Mrs. Pearce, *Mary Poppins* - Mrs. Brill/Bird Woman). A Boston-based actor, Ellen has also enjoyed working at North Shore Music Theatre, Speakeasy Stage, the Hanover Theatre, the Huntington Theatre Co., and Reagle Music The-

atre, among others! She is a three-time Best Supporting Actress IRNE nominee! (NSMT's *The Music Man* - Mrs Paroo, Reagle's *Oklahoma!* - Aunt Eller, Fiddlehead's *Funny Girl* - Mrs. Brice) Up next for Ellen - Jacqueline in Reagle's *La Cage aux Folles!*



KATE ROCCHIO (*Young Don Lockwood, Ensemble*) is thrilled to return to TBTS, having previously appeared as a Munchkin in *The Wizard of Oz*. Recently, she starred as Fredrika Armfeldt in URI Theatre's *A Little Night Music*. Favorite credits include *Mary Poppins* (Jane Banks), *Annie* (Molly), and *Willy Wonka* (Veruca Salt). A fifth grader at Broad Rock Middle School, Kate also enjoys surfing, lacrosse, & tennis.



JAMES SCHULTZ (*Rod, Diction Teacher, Ensemble, u/s R.F. Simpson and Roscoe Dexter*) is thrilled to make his Theatre By The Sea debut! He will also be seen later this season in *Newsies*. He has trained at the Gateway Acting School, the New York Film Academy, and the Upright Citizens Brigade, as well as with private teachers. Favorite credits include *Proof*, *42nd Street*, *Les Misérables*, *1776*, *Don't Dress for Dinner*, *Curtains*, and *I Love You, You're Perfect, Now Change*. Thanks to this wonderful cast and creative team, and to Mom, John, Sass, Booj, Grandma, and of course, My Amanda, for their love and support. Love you, Dad. jameseschultz.net



JOEY SIMON (*2nd Assistant Director, Ensemble, u/s Rod and Diction Teacher*) is thrilled to be a part of this company and making his Theatre By The Sea debut! A Michigan native, he received his BFA in Musical Theatre at Western Michigan University. Since graduating, some of his favorite regional credits include *Anything Goes* (Westchester Broadway

WHO'S WHO IN THE CAST

Theatre), *Spamalot* (Arkansas Repertory Theatre), *Cabaret* (Farmers Alley), and *All Shook Up* (Texas Family Musicals). Thank you to Kelli Barclay and the entire cast and crew for such a wonderful experience! Joey sends lots of love to his whole family, especially his Mom and Dad.



MICHAEL SKRZEK (*Butler, Ensemble, u/s Don Lockwood*) is happy to return to the Theatre By The Sea stage in this production of *Singin' in the Rain*, after having just appeared in the World Premiere of *Love and Other Fables*. Originally from Worcester, MA, Michael grew up in dance class and athletics, much like his idol, Gene Kelly. Michael's affinity for his work makes this opportunity to understudy Kelly's role an enchanting opportunity! For the last two years, Michael has been performing for Disney and Norwegian Cruise Lines, but is happy to be only "by the sea" performing on land once again!



KAYLEE VERBLE (*Zelda Zanders, Ensemble, u/s Lina Lamont*) is thrilled to be making her TBTS debut! She recently played Peggy Sawyer in Beef & Boards' production of *42nd Street*. Other favorites include *Elf* at The Fireside, Disney Cruise Line (Mainstage Performer/Dance Captain), *Dames at Sea* (Ruby) at Papermill Theatre Company, *Hairspray* (Amber), and *Beauty and the Beast* (Babette). Kaylee holds a Bachelor of Music in Vocal Performance/Music Theatre from NYU, Steinhardt. Special thanks to Kelli and Kevin for this wonderful opportunity. Love to family, friends, and SW Artists. kayleeverble.com
[@kayleeverble](mailto:kayleeverble)

BETTY COMDEN AND ADOLPH GREEN (Screenplay) had a groundbreaking partnership of more than 60 years, winning Tony® Awards for their lyrics and/or librettos for *Applause*, *Wonderful Town*, *Hallelujah Baby!*, *On the Twentieth Cen-*

ture, and *The Will Rogers Follies*. Other Broadway credits: *On the Town* (including the smash Broadway revival), *Peter Pan*, *Bells Are Ringing*, *Do Re Mi*, *Subways Are for Sleeping*, and *A Doll's Life*. They wrote the screenplays and/or lyrics for films including *Singin' in the Rain*, *Good News*, *On the Town*, *The Band Wagon*, *It's Always Fair Weather* (Academy Award nomination), and *Auntie Mame*. They were inducted into the Songwriters Hall of Fame and received the Kennedy Center Honors Award in 1991, among countless other tributes. Betty Comden appeared in the films *Garbo Talks* and *Slaves of New York*, and authored an essay collection entitled *Off Stage*. Ms. Comden is survived by her daughter, Susanna Kyle. Adolph Green appeared in the films *Simon*, *My Favorite Year*, *Lily in Love*, *I Want to Go Home*, and *The Substance of Fire*, and as Dr. Pangloss in the television broadcast of "Candide," conducted by Leonard Bernstein. Mr. Green is survived by his wife, Tony Award-winning actress Phyllis Newman (founder of the Phyllis Newman Women's Health Initiative of the Actors Fund), and their children, Adam and Amanda.

NACIO HERB BROWN (*Songs*) was born as Ignacio Herb Brown in Deming, New Mexico. He graduated from the University of California, Los Angeles. He was a successful writer of popular songs, and Broadway theatre music in the 1920s, originally doing this as a sideline to his financially successful career in California Real Estate. In 1928 he was hired to work in Hollywood by MGM and write movie music for the new medium of sound film. For his film work, he often collaborated with lyricist Arthur Freed. He appears in the film *The Hollywood Revue of 1929*. Brown's hits included "Fit as a Fiddle and Ready for Love," "Pagan Love Song," "Singin' in the Rain," "Wedding of the Painted Doll," and "You Are My Lucky Star." He wrote the music for the musicals *Singin' in the Rain* and *Take A Chance* and additional music for *Big Deal* and Earl Carroll's *Vanities*. Brown is an inductee of the Songwriters Hall of Fame.

WHO'S WHO IN THE CAST

ARTHUR FREED (*Songs*) was born in Charleston, South Carolina. He was a lyricist and a Hollywood film producer. Freed began his career in vaudeville, and he appeared with the likes of the Marx Brothers. He soon began to write songs, and was eventually hired by Metro-Goldwyn-Mayer. For years, he wrote lyrics for numerous films. In 1939 he was promoted to the position of producer, and helped elevate MGM as the studio of the musical. Freed chose to surround himself with film directors such as Vincente Minnelli and Busby Berkeley. He also helped shape the careers of stars like Judy Garland and Gene Kelly. His team of writers, directors, composers and stars came to be known as the "Freed Unit" and produced a steady stream of popular, critically acclaimed musicals that lasted until the late 1950s. Freed served as associate producer on *The Wizard of Oz*. His most famous song is "Singin' in the Rain", and two of his films won the Academy Award for Best Picture - *An American in Paris* (1951) and *Gigi* (1958).

KELLI BARCLAY (*Director & Choreographer*) NYC: *Himself and Nora* (Minetta Lane Theater), *Pipe Dream* (City Center Encores), City Center's *20 Years of Encores*, *Camelot* in Concert and *The Oscar Hammerstein Awards Saluting Carol Channing*, *40 Naked Women*, *a Monkey and Me* (Broadway Lab). Goodspeed Opera House: *Anything Goes*, *Damn Yankees* (Ct. Critics Circle Award nomination for Best Choreography), *Hello, Dolly!* (Ct. C.C. Award nomination for Best Choreography), *My One and Only* (Ct. C.C. Award Winner for Best Choreography); *How to Succeed in Business...* (Ct. C.C. Award nomination); and *Hello, My Baby!* at The Norma Terris Theatre. Other: *Eugene O'Neill Cabaret Conference*, *Singin' In the Rain* (Gateway Playhouse, St. Louis MUNY), *42nd Street* (Arts Center of Coastal Carolina), *White Christmas* (Ogunquit). Feature Film: *Made for Each Other* (Assoc. Choreographer) *The Radio City Music Hall Christmas Spectacular* (Detroit, MI). NYMTF: Michael Holland's *Hurricane the Musical*; David Shire's *My History of Marriage*. Kelli helped Goodspeed design and develop their Musical Theater Dance In-

tensive which has been successfully ongoing for 4 years. Mastering every style of dance, she's been on faculty for numerous dance organizations. Honorary Award by Dance Educators of America for contribution in dance world. Many original ballets: *Once Upon A Wish* and *Angels Among Us* starring NY Times Best-selling author Rev. Alma Daniel. Faculty: American Ballet Theater's Intensive in NYC. Associate/Asst. Choreographer Broadway credits: *Ain't Broadway Grand* (Tony® nom. Best Choreography), *Rodgers and Hammerstein's State Fair*, *42nd Street* (2001 Award winning Revival, Tony® nom. Best Choreography) and *Irving Berlin's White Christmas* (Tony® nom. Best Choreography). Kelli has set *42nd Street* in Holland, New Zealand and Germany as well as the current Nat'l tour. Most recently *42nd Street* at London's Theatre Royal Drury Lane. She also worked diligently on the film version which just premiered at movie theaters nationwide and is available on Broadway HD. Ct. Critic Circle Award for the reinvented *Will Rogers Follies* at Goodspeed Opera House. So proud to have choreographed the acclaimed *Jekyll & Hyde* last season for North Shore Music Theatre.

MILTON GRANGER (*Music Director*) returns to Theatre By The Sea having previously music directed *Cats*, *Mary Poppins*, and *My Fair Lady*. As pianist/conductor: Broadway: *Mary Poppins*, *The Woman in White*, *Chitty Chitty Bang Bang*, *Cyrano the musical*, and *Camelot* (with Robert Goulet). National Tours: *Phantom of the Opera*, *Big*, *Sunset Boulevard*, *Camelot*. International: *West Side Story*. Over 100 regional productions at North Shore Music Theatre, Baltimore CenterStage, Westchester Broadway Theatre and others. Work as composer/lyricist: Two First Prizes in National Opera Association new chamber opera competition; eight chamber operas, performed regularly throughout U.S. and Canada. Several produced musical plays, including *Castle Walk* (NYMF Next Link Selection), and *Peter Rabbit and the Garden of Doom* (winner, Actors' Playhouse competition). miltongranger.com

WHO'S WHO IN THE CAST

KYLE DIXON (*Scenic Design*). Kyle's scenic artwork may be seen across the United States, from NYC to Las Vegas. Selected designs include: *West Side Story*, *Music Man*, *Young Frankenstein*, *Mamma Mia!*, *Hairspray*, *Peter Pan* and *42nd Street*, *Oklahoma!* (North Shore Music Theatre), *The Broadway Classic Music Dance Review* (Tianqiao Performing Arts Center, Beijing, China) *Camelot* (Westchester Broadway Theatre), *Buddy*, *The Wizard of Oz*, *Joseph*, *Sister Act*, *Music Man*, *The Producers*, *Young Frankenstein*, *Mamma Mia!*, *Beauty and the Beast*, *Chicago*, and *Love and Other Fables* (Theatre By The Sea, BWW Regional Awards), *Growing up '70s starring Barry Williams* (Off Broadway), *Angelina Ballerina*, *The Musical* (NYC, Toronto, National Tour), *Fancy Nancy*, *the Musical* (NYC, National Tour), *It Shoulda Been You* starring Kim Zimmer (Gretna Theatre), *Forever Plaid*, *Lend Me A Tenor*, and *Joseph* (Palace Theatre In The Dells) and more. Kyle has designed concert events for Faith Prince, Tommy Tune, Pam Tillis, and the NC gubernatorial Inauguration Gala (Telly Award). In addition to theatre, he is the designer of NC's historic Elizabethan Gardens' *Winter Lights*, a ten-acre holiday display. KyleDixonDesigns.com

DAVID COSTA-CABRAL (*Costume Coordinator*) received his MFA in Theatrical Design from Southern Methodist University and is currently a tenured full professor at Providence College. Among his local design credits: *Another Roll of the Dice*, *The Cradle Will Rock*, *Dirty Rotten Scoundrels*, *Side Show*, *The Three Penny Opera*, *Oklahoma!* and *Carousel* at The Boston Conservatory @ Berklee; *Sweeney Todd*, *Phantom of the Opera*, *A Christmas Carol*, *Jesus Christ Superstar*, *Grease*, *Big River* and *Damn Yankees* at LaSalle Academy; and *Joseph...*, *Grease*, *Annie*, *The Sound of Music*, *How to Succeed...*, and *West Side Story* at Theatre By The Sea. In addition to his theatre work David has created costumes for The Miss America Pageant and quite a number of bridal ensembles. Among those he has created costumes for are Viola Davis, Katherine McPhee and Liz Callaway.

JOSE SANTIAGO (*Lighting Design*) is happy to be returning for his fourth consecutive season here at Theatre By The Sea as the Resident Lighting Designer. Other designs include: *Oklahoma!*, *Mamma Mia!*, *Peter Pan*, *Spamalot*, *Evita*, *Hairspray* (North Shore Music Theatre); *Rent*, *Anything Goes*, *Rodgers and Hammerstein's Cinderella*, *Sister Act The Musical*, *Young Frankenstein*, *White Christmas* (Gateway); *Of Mice and Men* (Bay Street Theatre); *Man of La Mancha*, *La Cage aux Folles*, *Crazy for You* (The Wick Theatre); *Parade*, *Holiday Inn*, *Mamma Mia!* (Merry-Go-Round Playhouse); *Shrek*, *The Hunchback of Notre Dame*, *Matilda* (5 Star Theatricals). He received his Master of Fine Arts in Lighting Design from Florida State University. jsantiagodesign.com

JOANNA LYNN STAUB (*Sound Designer*) is happy to be designing for Theatre By The Sea for the first time. Off-Broadway: The Public Theater, Ensemble Studio Theatre, WP Theatre, 59E59 and NY Theatre Workshop. Regional: Goodman Theatre, La Jolla Playhouse, 5th Avenue Theatre, Oregon Shakespeare Festival, Kansas City Rep, Alliance Theatre. Classical: St. Louis and New Jersey Symphonies. Television: "NBC - Live! The Sound of Music," "Peter Pan" and "The Wiz." Ms. Staub has extensive credits associate designing and engineering Broadway and national touring companies. She holds degrees from Ithaca College and the University of Illinois. jlssound.com

MEG KANE (*Wig & Hair Design*) is joining Theatre By The Sea as wig designer for her first season. In addition to holding a BFA in Theatre from URI, Meg is currently working towards a Master's Degree in Clinical Mental Health Counseling from Lesley University. Meg's regional work includes Actors Theatre of Louisville, The Walnut Street Theatre and Ocean State Theatre Company. Favorite regional credits include *1776*, *Anything Goes*, *Damn Yankees*, *Around The World in 80 Days*, *Buddy: The Buddy Holly Story*, *Damn Yankees*, *Dracula*, *Maple & Vine*, *Boris Godunov*, *South Pacific*, *The King and I*, and *The Miracle Worker*. Meg

WHO'S WHO IN THE CAST

lives in Smithfield, RI with her cat Loki. Thanks to family and friends for their love and support; special thanks to DTH, MG, TV, JV, VT, & Thom Warren.

KATE L. FERDINANDI* (*Production Stage Manager*) is elated to be "By The Sea" for her fifth summer! Selected credits: *Chicago*, *Mamma Mia!*, *The Producers*, *The Music Man*, *The Wizard of Oz*, *Buddy: The Buddy Holly Story* (Theatre By The Sea); *Hands on a Hardbody*, *Intimate Apparel*, *Fun Home*, *Anna in the Tropics* (Colorado Springs FAC), *A Christmas Carol* ('17 and '18, The Hanover Theatre); *Little Women*, *Born Yesterday*, *White Christmas*, *Billy Elliot*, *The Miracle Worker*, *1776*, *The Addams Family* (Ocean State Theatre Company); *The Wiz* (Fiddlehead Theatre); *Fiddler on the Roof* (Pennsylvania Shakespeare Festival); *A Christmas Carol*, *Steel Magnolias* (Trinity Rep); *A Doll's House*, *Glengarry Glen Ross*, *The Glass Menagerie* (Sandra Feinstein-Gamm Theatre). Thanks to Mom for the roots and wings! Proud member of Actors' Equity.

JAMES KANE* (*Assistant Stage Manager*) is excited to be joining Theatre By The Sea this summer! At Trinity Rep, James has served as: Production Stage Manager for *An Iliad*; Assistant Stage Manager for *black odyssey*, *Little Shop of Horrors*; Production Assistant for *Pride and Prejudice*, *Ragtime*, *Othello*, *Death of a Salesman*, *Like Sheep to Water*, or *Fuente Ovejuna*, *A Midsummer Night's Dream*, *Beowulf: A Thousand Years of Baggage*, *A Christmas Carol* (2016 & 2017), and *Oklahoma!*. Other theatres: Trinity Rep/Rhode Island Latino Arts Teatro en el Verano, Brown/Trinity Rep MFA program, Ringling Bros. Barnum and Bailey Circus: 126th Edition as a Clown and 128th Edition as a production assistant. James is a Rhode Island College alumnus.

BILL HANNEY (*Owner/Producer*) is honored and proud to have been responsible for the re-opening of the nationally renowned Theatre By The Sea in 2007. He began his career in show business at age 19, leasing and developing movie theaters, including his first multiplex in Quincy, Massachu-

sets. Before long, he was booking rock shows (Jefferson Starship, Rush) and other types of live entertainment, which eventually led to the presenting and producing of Broadway productions. One such show was an appearance by the legendary mime artist, Marcel Marceau. As president of Broadway Productions, Bill presented national tours such as *Annie*, *Amadeus*, *Dancin'*, *Peter Pan*, *The Rocky Horror Show* and *Mark Twain* starring Hal Holbrook, throughout New England including Worcester, Springfield, Portland, Maine and Boston. Aside from his work reopening Theatre By The Sea in 2007, one of Bill's crowning achievements was the 2010 purchase and re-opening of North Shore Music Theatre, a landmark 1,500 seat professional theatre, which is in its tenth successful year of operation in Beverly, MA (nsmt.org). Throughout his career, Bill has stayed focused on his movie theatre chain having bought, built, owned, operated and sold more than 30 cinemas. His company, Entertainment Cinemas, currently operates seven movie complexes in four states. In 2009, Bill was elected President of the Theatre Owners of New England. Bill's ongoing work with NSMT inspires him to consider acquiring additional performance venues at which he plans to someday share his productions between his theatres. Bill has been named to the North Shore Top 100 by the North Shore Chamber of Commerce. In 2012, he was recognized by both the Beverly Chamber of Commerce and Salem Chamber of Commerce as Business Person of the Year. He is the recipient of the 2015 Leslie S. Ray Hall of Fame Award, presented by the Greater Beverly Chamber of Commerce. Bill is a member of the League of Broadway Producers and was involved with the recent revival of *Pippin*, as well as developing several new musicals and has just launched Cape Live!, a new summer entertainment series at the Barnstable Performing Arts Center in Hyannis.

KEVIN P. HILL (*Producing Artistic Director*). Born and raised in Waltham, Massachusetts, Kevin began his theatrical career as dancer and actor. He

WHO'S WHO IN THE CAST

appeared in National Touring companies of *Hello, Dolly!* with Carol Channing, Leslie Uggams and Michele Lee, *Anything Goes* and the International Touring Company of *A Chorus Line*. New York audiences have seen him in the Off-Broadway production of *Party*. Regional credits as a performer include: *West Side Story*, *Good News! A Chorus Line*, *My Fair Lady* and Marvin in *Falsettoland*. Kevin has directed and choreographed over 100 productions across America. He has had the privilege of working with such stars as Marin Mazzie, Joanne Worley, Kathleen Turner, Josh Groban, Jonathan Groff and Tony Award winner, Cady Huffman. In New York, he was the assistant to the director of *On the Twentieth Century* at the New Amsterdam Theatre and assistant to the choreographer on the revival of *Guys and Dolls*. He directed and choreographed *Mamma Mia!*, *Smokey Joe's Café*, *Sister Act*, *Young Frankenstein*, *Mary Poppins*, and *Grease* here at Theatre By The Sea and *A Christmas Carol*, *Young Frankenstein*, *Mary Poppins*, *Sister Act*, and *Mamma Mia!* at Bill Hanney's North Shore Music Theatre in Beverly, MA, where he is also Producing Artistic Director. Kevin has been nominated as Best Director/Choreographer for his work on *Smokey Joe's Café*, *Rent*, *The Full Monty*, *Chicago*, and *Edwin Drood*, and was awarded the NH Theatre Award for Best Choreography for *West Side Story* at the Papermill Theatre. Kevin has also been awarded Six Broadway World awards and two Motif awards for his productions of *Mamma Mia!*, *Mary Poppins* and *Young Frankenstein*. Future projects include an original danced play called *Standing Still*. As a Professor of Dance, Kevin has been on faculty at Pennsylvania State University, Kansas State University and most recently The Boston Conservatory of Music. Kevin is a proud member of SDC, AEA and Dance Masters of New England, Chapter 5.

THOM WARREN* (*Associate Producer*) began his association with Theatre By The Sea as an actor playing Harry the Horse in *Guys and Dolls* (2000). He then returned in 2013 to become the Company Manager, a position he held until 2015. A

member of Actors' Equity and SDC, Thom is also a casting associate for Theatre By The Sea. In NYC he was the Company Manager for the Off-Broadway play *Psycho Therapy*. As a performer, Thom began his career with Pittsburgh Ballet Theatre before moving on to musical comedy and has appeared in close to 100 shows. Choreography credits include productions of *West Side Story* (NSMT & Kansas City Starlight), as well as a full-length production of *The Nutcracker*. Thom would like to thank Bill, Kevin, Tom, Helen and Chris. And of course, Dan, Sam, Jimmy and Peter. Dammit!

MATTHEW CHAPPELL (*Casting Director*) is honored to continue working with this remarkable creative team as resident Casting Director and Associate Producer for Bill Hanney's North Shore Music Theatre and resident Casting Director for Theatre By The Sea. An accomplished performer, he is fortunate to have worked all over the world in more than 30 productions, including several shows at NSMT, as lead vocalist in Stephen Schwartz's *Magic To Do* for Princess Cruise Lines, and appearances at Feinstein's/54 Below, The Duplex, Carnegie Hall, and The Metropolitan Room. For many years, Matthew worked as a talent agent, casting associate, and photographer for Heyman Talent Agency, specializing in TV/film, commercials, runway, print and voiceovers. He is a former Associate Producer for Encore International, casting and producing shows for theme parks, cruise ships, and corporate events.

MUSIC THEATRE INTERNATIONAL is one of the world's leading theatrical licensing agencies, granting schools as well as amateur and professional theatres from around the world the rights to perform the largest selection of great musicals from Broadway and beyond. MTI works directly with the composers, lyricists and book writers of these shows to provide official scripts, musical materials and dynamic theatrical resources to over 60,000 theatrical organizations in the U.S. and in over 60 countries worldwide. (*MTIShows.com*)

WHO'S WHO IN THE CAST

ACTORS' EQUITY ASSOCIATION (AEA - actorequity.org), founded in 1913, represents more than 45,000 actors and stage managers in the United States. Equity seeks to advance, promote and foster the art of live theatre as an essential component of our society. Equity negotiates wages and working conditions, providing a wide range of benefits, including health and pension plans. AEA is a member of the AFL-CIO, and is affiliated with FIA, an international organization of performing arts unions. The Equity emblem is our mark of excellence.

THEATRE BY THE SEA, which is on the National Register of Historic Places, has had many incarnations over the years. The Tyler family purchased the property in the early '20s. After Alice Tyler was left a widow with three young children, she ran the property as a summer camp for girls. When the depression hit, she decided to create jobs and provide a future for her children by turning the barn into a theatre. The 300-seat theatre opened on August 7, 1933 with a production called *Strictly Dynamite*. That initial season lasted four weeks and featured four different plays, one of which was taken to New York. In 1938, a Yale Cooperative took over. Then, on September 2, a hurricane hit. The back wall of the theatre caved in and the stage roof was blown off. During the repairs, the theater was expanded to include a balcony. The newly enlarged theatre operated through 1941 and then went dark during the war. In 1946, the theatre's most glamorous and star-filled period began. The theatre became what is referred to as a "star-sys-

tem" house opening with a show called *Dream Girl* which starred Judy Holliday. Other headliners who were brought in included Tallulah Bankhead, Mae West, Groucho Marx, and Marlon Brando. Following the 1958 season, the property was sold to the Bontecou family, who leased it sporadically for several years, and by 1966 there were plans to tear down the theatre. Upon hearing that the theatre was to be destroyed, Tommy Brent, who had previously worked as a publicist for the theatre, returned and saved the theater from demolition. His first show opened on June 23, 1967 and he ran the theatre successfully for twenty-two years. In 1988, FourQuest Entertainment, which consisted of Laura Harris, (who had previously worked at the theatre for eleven summers), Renny Serre and Richard Ericson, came on board. Following extensive renovations, FourQuest reopened the theater in the spring of 1989 and continued producing high quality summer theater in Matunuck until the fall of 2003. The theatre went dark once again until 2007, when entrepreneur Bill Hanney purchased the property and, with producing partners, successfully mounted a production of *A Funny Thing Happened on the Way to the Forum*, just six weeks later, reopening the historic theatre on August 8, 2007. Theatre By The Sea continues to annually produce a successful four-musical subscription season along with a children's theatre and concert series.

* Member of Actors' Equity Association, the Union of Professional Actors and Stage Managers in the United States.

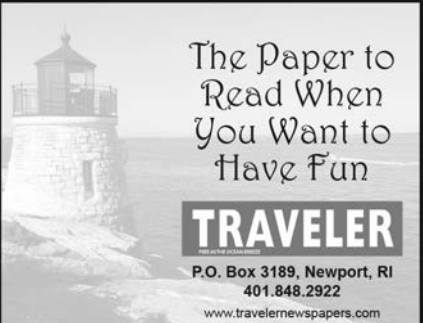
We fly, so your time doesn't!

laundryfly.com



Laundry & Dry Cleaning Delivery

Sign up now @Laundryfly.com
or call (401) 234-4231



The Paper to
Read When
You Want to
Have Fun

TRAVELER

P.O. Box 3189, Newport, RI
401.848.2922
www.travelernewspapers.com

BILL HANNEY'S THEATRE BY THE SEA

PATRON INFORMATION

BOX OFFICE HOURS

MONDAY – SATURDAY
11am – 6pm

PERFORMANCE DAYS

11am until curtain
PERFORMANCE SUNDAYS
12 noon until curtain

CONTACT US

Box Office: (401) 782-8587
E-mail: boxoffice.tbts@gmail.com
Website: www.theatrebythesea.com
Administrative offices: (401) 782-3800

GENERAL TICKET INFORMATION

Children under 4 are NOT allowed at any of the four subscription musicals. This includes babies and toddlers that can be held.

Children under 4 are welcome at our one-hour-long Children's Festival productions, however, children age 2 and above must have a ticket and sit in a seat.

Everyone must have a ticket to enter the theatre, sit in a seat, and be able to sit quietly through the entire performance.

Not all programming is appropriate for all ages. All musicals have a content advisory and a full synopsis on their individual pages on the website. Please feel free to contact the Box Office with any question regarding the content of the show. Although opinions on appropriate viewing may differ, we will do our best to answer your questions regarding language, violence, and adult situations.

TICKET FEES

Restoration Fee: \$1 added to all tickets (purchased in person/by phone/online) to the 4 season musicals and concert series events.

Handling Fee: \$6 per ticket online, \$4 per ticket by phone, no fee for in person sales.

**ALL TICKET PURCHASES ARE A FINAL SALE.
NO REFUNDS. TICKETS ARE NON-TRANSFERABLE.**

GIFT CERTIFICATES

Gift Certificates are available through the Box Office or online anytime.

GROUP SALES

Discount rates are available for groups of 10 or more. Call (401) 782-3800 x 112

FIRE EXITS

Theatre By The Sea has six fire exits. Two fire exits are located on either side of the auditorium and also in the balcony. There are additional exits on both sides of the lobby as well as through the center lobby barn doors.

BISTRO BY THE SEA

For reservations call (401) 789-3030
or online at www.theatrebythesea.com

REFRESHMENTS

Refreshments are normally available before the show and during intermission at the Gazebo and at Bistro by the Sea. Glass bottles are not permitted in the auditorium.

RECORDING DEVICES, CAMERAS, PAGERS & CELL PHONES

Use of recording devices and cameras is not permitted. Please be certain that all pagers, digital watches and cell phones are turned off, and refrain from text messaging or emailing during the performance.

SMOKING

Fire regulations forbid smoking in the auditorium, lobby or restrooms. Smoking is allowed outside the building in the side parking lot. Kindly use the receptacles for disposal.

RESTROOMS

Men's and women's restrooms are located off the lobby. Handicapped accessible and additional men's and women's restrooms are located in the gazebo area.

THEATRE BY THE SEA STAFF 2019

Owner & Producer	Bill Hanney
Producing Artistic Director	Kevin P. Hill
Associate Producer	Thom Warren
General Manager	Tom Senter
Casting Director	Matthew Chappell
Box Office Manager	Vincent Lupino
Director of Marketing and Communication	Mike Ceceri
Press Representative & Group Sales Coordinator	Karen Gail Kessler
Director of Corporate and Community Relations	Karen Nascembeni

PRODUCTION STAFF 2019

Production Manager	Randy Beck
Company Manager	Lacy Reilly
Assistant Company Manager	Sean Bertrand
Technical Director	Steve Wilson
Assistant to the Technical Director	Brittany Costello
Production Deck Chief	Cameron Waitkun
Production Fly Chief	Michael Greene
Production Apprentices	Adrienne Brennan, Emmy Delmonico, Timothy Fine, Alexander Santiago

Properties Artisan	Aubanita Kirk
Director of Costumes	David Cabral
Assistant Costume Shop Manager	Kerry Delagarza
Stitchers	Alex Quigley, Mikayla Reid, Jennifer Stavrakas
Costume Shop Apprentice	Marie Sylvester
Wardrobe Apprentices	Anthony Feola, Adam Oliveras
Master Electrician	Elliot Konstant
Assistant Master Electrician	Thomas Edwards
Season Sound Supervision	Danny Erdberg
Audio Engineers	Laura Brauner, Jordan Del Pino
Sound Shop Builders	Kenneth Goodwin, Kelsi Halverson, Valentine Monfuega
Assistant Audio Engineer	Brian Miranda
Production Stage Managers	John Carpentier*, Kate L. Ferdinandi*
Assistant Stage Managers	James Kane*, Logan Pratt*
Stage Management Apprentices	Gavin DiFranco, Owen Smith
Acting Interns	Maggie Bergman, Victoria Biro, Jason Haggerty, Natalie Livingston
House Managers	Maria Day, Michael Salvo
Box Office Assistants	Karen Gail Kessler, Tom Lavallee, Louise Tetreault, Bill Whitehead, Jr., Marcia Zammarelli

Music Contractor	Mike Sartini
Facilities Manager	Michael Anthony
Facilities Staff	Scott Howe
Program Printer	RPI Printing
Program Advertising	Karen Gail Kessler
Production Photographer	Steven Richard Photography
Lighting Rentals	4Wall Entertainment, Inc.
Sound Rentals	Masque Sound and Recording
Landscaping and Lawn Service	RDS Landscaping
Cleaning Services	Deborah Moulton, Melony Dutton
Lobby Flowers	Flowerthyme
Accounting	Thomas Armand, Armand & Co. PC
Legal Counsel	James Aukerman, John Kenyon

SCENERY BUILT BY NORTH SHORE MUSIC THEATRE SCENE SHOP

Production Manager	Nicholas Novaco
Associate Production Manager	Scott G. Nason
Technical Director	Steve Wilson
Assistant Technical Director	Chris Konstantinidi
Scene Shop Forman	Myles McMann
Scenic Carpenters	Derek Hodge, Emily O'Sullivan
Welder	Abbey Kulhavy
Properties Artisans	Morgan Rodgers, Jennie Fischer
Scenic Charge	Sasha Seaman
Assistant Scenic Charge	Shannon Gemma

* Member of Actors' Equity Association, the Union of Professional Actors and Stage Managers in the United States.

HeyRhody

*Your wicked awesome guide
to enjoying Rhode Island*

Find us at Dave's Marketplace, McQuade's Market
and hundreds of locations statewide

HeyRhody.com

35th Anniversary Celebration



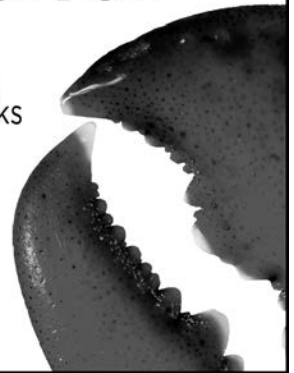
August 2 - 4, 2019

Seafood Festival

Rhode Island's Best Seafood. Arts & Crafts,
Midway Entertainment, Car Shows, Fireworks
and Live Entertainment.

Visitor Info Center
4945 Old Post Road
Charlestown, RI 02813
401.364.3878

www.charlestownrichamber.com



**JOIN US IN SUPPORTING THESE
LOCAL BUSINESSES THAT SUPPORT
THEATRE BY THE SEA**

CARPENTER'S BEACH MEADOW, INC.

Summer Cottage Sales
854 Matunuck Beach Road
Wakefield, RI • (401) 783-4412

NARRAGANSETT RUBBISH REMOVAL, INC.

Your Local Hauler Is Your Best Hauler
(401) 783-3177

Know More. Live Better.



Subscribe today at **RIMonthly.com**

Your subscription to *Rhode Island Monthly* includes a FREE digital subscription which allows you to read the current issue or back issues using your web browser. Or you can download one of our free apps to access your subscription on your phone or tablet.

Rhode Island
MONTHLY

Know more. Live better.



YOU'VE NEVER SEEN IT LIKE THIS...

OH, WHAT A SEASON 2019 WILL BE!

BROADWAY MUSICALS CREATED SOLELY FOR OUR UNIQUE THEATRE-IN-THE-ROUND

<p>RODGERS & HAMMERSTEIN'S OKLAHOMA! THE GREAT AMERICAN MUSICAL</p> <p>SPONSORED BY BEVERLY BANK</p>	<p>Disney FREAKY FRIDAY A NEW MUSICAL</p>	<p>JERSEY BOYS</p> <p>SPONSORED BY ABIOMED</p>
JUNE 4 - JUNE 16	JULY 9 - JULY 21	AUG 6 - SEPT 1
<p>Paramount Pictures 10086 → SUNSET BLVD.</p>	<p>THE BODYGUARD THE MUSICAL</p>	<p>David Coffee sings in A TRADITION SINCE 1989 A CHRISTMAS CAROL A musical ghost story</p> <p>MARKETS FREETRY SPONSORED BY</p>
SEPT 24 - OCT 6	OCT 29 - NOV 10	DEC 6 - DEC 22

TICKETS FOR ALL MUSICALS, CONCERTS & KIDS' SHOWS ON SALE NOW!

BILL HANNEY'S
NORTH SHORE
MUSIC THEATRE

f i t o
@OFFICIALNSMT



978.232.7200
NSMT.ORG
62 DUNHAM ROAD • BEVERLY, MA

Join WCCU Today

and experience what #WCCUCares really means!

"I joined because I wanted all the perks of a big bank but with a small-town feel. Plus, it is my community and the **best bank** for me."

Kelly R. of Richmond

"WCCU helped my wife and I pay off our mortgage. We have been **mortgage free** for over a year now and have gained **financial Freedom.**"

David I. of Charlestown

"I joined WCCU because of the service and the **lower fees**. All the employees are **very friendly** and **helpful** and will do everything to resolve any issues. I would recommend this institution to family and friends."

Marge P. of Westerly

Westerly Community
Credit Union

Westerly ~ Richmond
Wakefield
www.westerlyccu.com
401.596.7000





**River Bend
Athletic Club**

www.riverbendac.biz



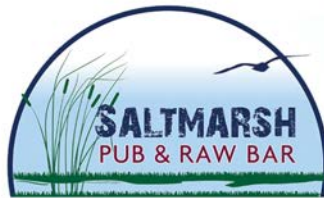
*Official Fitness
Provider For:
Theatre By The Sea*

AND



Home of:

Summer Rates Available!
Come by for a tour!



**DELICIOUS
HOMEMADE DESSERTS**

**LOCAL SEAFOOD
OYSTERS - FISH - SCALLOPS - CLAMS**

**NEW BAR
WITH MARSH VIEWS AND LARGE TVs**

**TWO OUTSIDE PATIOS
AND FIRE PITS**

**TAKE OUT WINDOW FOR CLAM CAKES AND CHOWDER
ON THE WAY TO THE STATE BEACH**

**706 SUCCOTASH ROAD, SOUTH KINGSTOWN, RI
NEAR EAST MANUNUCK BEACH**

401.789.4556

CAPNJACKSRESTAURANT.COM

*Joseph Renzulli, MD, Chief of Urology
Joseph Brady, MD, Specializing in
General Surgery*



**Because you get
da Vinci precision
in the hands
of experts**

*Now offering robot-assisted
surgery for urologic and general
procedures*

The unprecedented precision of the latest da Vinci robot-assisted technology in the hands of two of Rhode Island's most experienced da Vinci practitioners. Plus the superior patient experience that South County Health is known for. That's why patients choose us for their surgical treatment of prostate, bladder, and kidney cancer, as well as hernia, gallbladder, and other urologic and general surgery procedures.

www.southcountyhealth.org



South County Urology 401-788-8780
South County Surgery 401-284-1212

**Fine Thai &
Asian Cuisine**

**Now Serving Beer,
Wine & Cocktails**



**Gluten Free &
Vegan Menu**



**402 A-B Main St.
(Across from Paul Masse Chevrolet)
Wakefield, RI 02879
401.284.4220**

www.sa-tang.com



**"LOOK MOM, I'M
IN THE PAPER THIS WEEK!"**



**LOCAL KIDS, LOCAL NEWS, LOCAL SPORTS...
YOUR LOCAL NEWSPAPERS**

- THE NARRAGANSETT TIMES
- THE NK STANDARD-TIMES
- THE EAST GREENWICH PENDULUM
- THE COVENTRY COURIER
- THE CHARIHO TIMES
- THE KENT COUNTY DAILY TIMES



187 MAIN STREET • WAKEFIELD, RI 02879
P. 401-789-9744 • F. 401-789-1550 • WWW.RICENTRAL.COM

**CLASSICAL
95.9 WCRI**

classical959.com



*Conducting
conversations*

with **MIKE MAINO**

*Music and interviews with people in the arts
Sunday evenings 7:00 - 8:00 p.m.*

Proudly sponsored by:



Listen for exclusive interviews with
Bill Hanney and Theatre By The Sea stars



THE INDEPENDENT

Your Hometown Newspapers

The #1 source for local news, sports and entertainment in Washington & Kent Counties.

Proud Publisher of:

The Independent
Chariho Times
Coventry Courier
East Greenwich Pendulum
Kent County Daily Times

Narragansett Times
North Kingstown Standard Times
The Westerly Sun
The Express
Mystic River Press

We've got you covered!

SUBSCRIBE TODAY!
401-821-1818



Village of MATUNUCK



Cold Cocktails,
Great Food,
Cottage Rentals,
Pizza,
Paddle Boards,
Surf Gear



895-920 Matunuck Beach Road, South Kingstown, RI, Matunuck Beach



Bistro

by the Sea

CASUAL | CONTEMPORARY | CREATIVE
THEATRE BY THE SEA'S ON-SITE RESTAURANT
THE PERFECT COMPLEMENT TO YOUR THEATRE EXPERIENCE

★ LUNCH: WED - SUN FROM 12PM - 4PM ★

★ DINNER: NIGHTLY 5PM - 9:30PM ★

SPECIAL KIDS MENU

WEDDINGS & PRIVATE EVENT RENTALS

GIFT CERTIFICATES AVAILABLE

RESERVATIONS:

BY PHONE 401.789.3030

ONLINE THEATREBYTHESEA.COM/BISTRO

JOIN US ON WEEKENDS AFTER THE EVENING SHOWS FOR

LATE NIGHT CABARET

PERFORMED BY THE CAST AND STAFF
EVERY FRIDAY, SATURDAY AND SUNDAY
(Excludes Opening Weekend Of Each Show)



2015 2018



MOTIF MAGAZINE
THEATER AWARD
WINNER
"BEST CONCESSIONS"